



SECTOR
**OFFSHORE
WIND**



GORIZIANE

**ENGINEERING &
CONSTRUCTION**

Since 1948, a family company

GORIZIANE E&C S.P.A. IS A RELIABLE PARTNER IN SUPPLYING HIGH-QUALITY PIPELINE EQUIPMENT AND PLANTS FOR ONSHORE AND OFFSHORE ENVIRONMENT, COMPLEX TURNKEY SOLUTIONS FOR NAVAL AND MARITIME, **WIND-FARM SPECIAL EQUIPMENT & INNOVATIVE AUTOMATED FABRICATION CONCEPTS**, INTEGRATED HANDLING PLANTS FOR INDUSTRIAL FACTORIES.

G-FIT FOR JACKET FABRICATION

G-FIT (**Goriziane - Fabrication Innovation Technology**) is a special equipment for jacket and platform fabrications, and multipurpose alignment operations. The system is used to make the alignment of two pipes (i.e. stub and leg/pile/can) in a very precise and rapid process with an automated system which improves productivity, increases safety, and reduces manpower.

It is also equipped with a 3D laser to scan and analyze pipe data in the software's built-in system in order to allow repetitive and precise pipe positioning. G-FIT is a reliable solution for the pipe processing industry, and it can be optimized for any specific production process.



SMART POSITIONER

This equipment offers 6-axis movement to guarantee a precise and repetitive position of the stubs.



SMART HOLDER

Used as a support for legs/piles/can with 4-axis movement and it can easily accommodate different pipe diameters.



3D SCAN SYSTEM

It is composed of a 3D laser which scans and analyzes the profiles of stub and the leg/pile/can. It includes a built-in software system in order to allow repetitive and precise pipe positioning.

GORIZIANE'S OFFSHORE WIND EQUIPMENT

A proud member of Offshore Energy

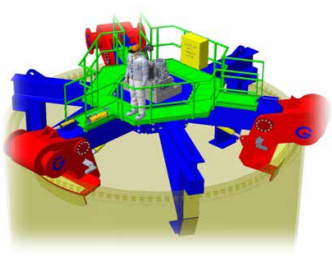


HANDLING EQUIPMENT



Hydraulic Release Mechanism (HRM) for Shackles

The HRM is typically used in marine foundations and similar applications where unhooking the load is not possible or the associated risks and/or cost of unhooking are too high.



Flange Lifting Tools

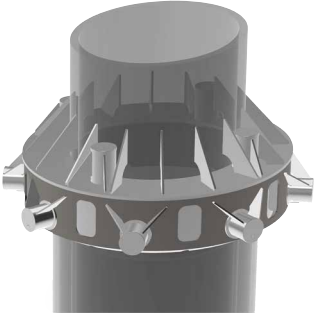
It is a specifically designed to lift Jackets, Transition pieces or other structures which have a vertical connection flange.

INSTALLATION EQUIPMENT



Casing Stability System (CSS)

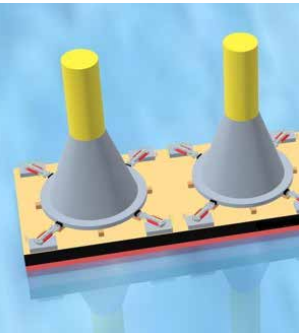
It is a special equipment used to install the piles into the casings and to mitigate any potential loss in casing stability, casing slippage and casing offset from its design position/inclination.



Jacket Pile Grippers

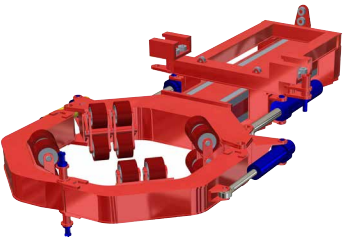
This equipment allows to secure the jacket and maintain the levelled position of the jacket foundation. It also offers stability during grouting operations, which improves grout construction quality and applies cost reduction.

VESSEL EQUIPMENT



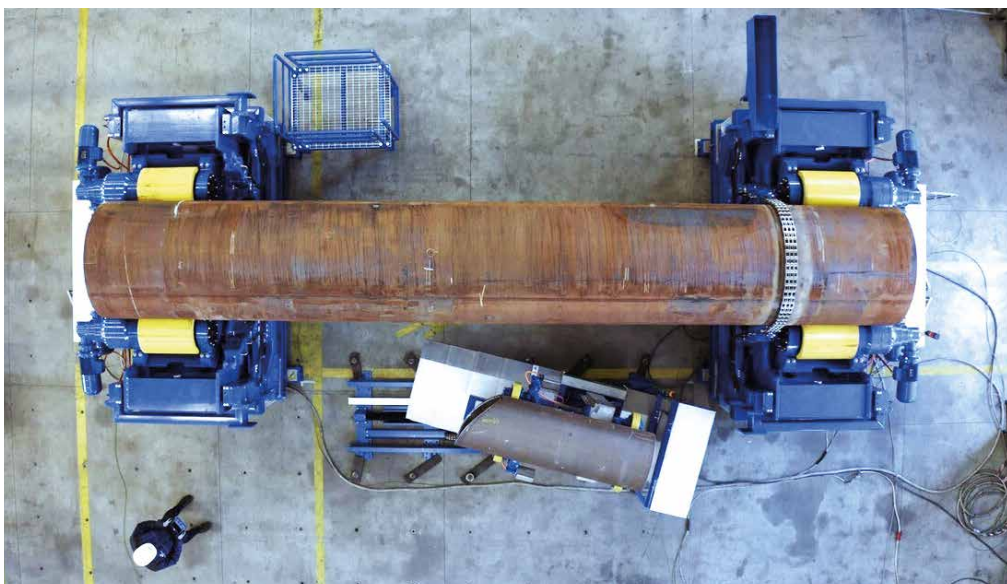
Gravity Base System (GBS) Sea Fastening

It is designed to lock the Gravity Base System on Cargo Barge to maximize the safety during entire transportation.



Monopile Outrigger

It is a special equipment used for the installation of MONOPILES in wind farm fields. This equipment can be applied to moored, dynamic positioning vessels as well as to the existing heavy lift fleet.



Increase production



Cost efficient
Time saving



High precision
Process reliability



Increase safety
Reduction of personnel
required on working area
Reduction of cranes
and lifting operation



Automated and
integrated process
Low CO₂ emissions
process



Modular systems
Portable solutions